

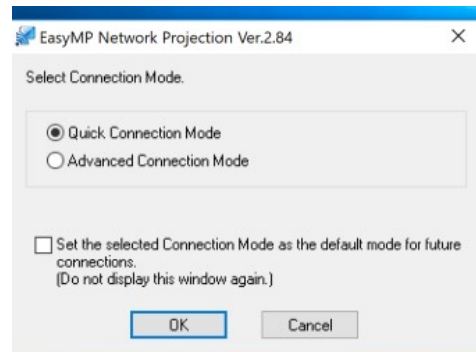
Epson EasyMP Network Projection (laptops)

1. Download software for your device at: https://epson.com/Support/Projectors/PowerLite-Series/Epson-PowerLite-975W/s/SPT_V11H835020

Choose your OS then follow instructions to download and install the software on your device.

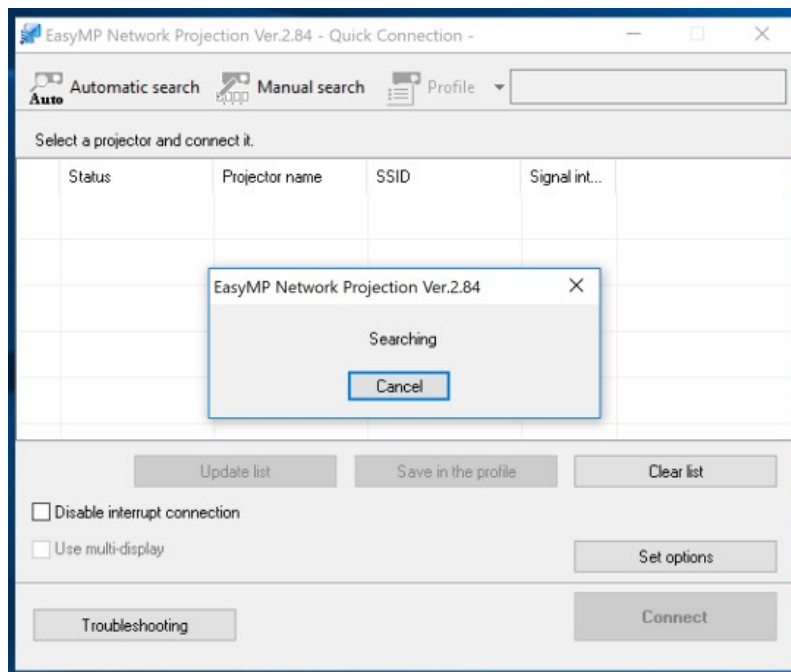
2. Go to programs and connect to the Epson iProjection V2,22

Then select "Advanced Connection Mode"



3. The Connection Screen will open and connect to the projector. (Projector EBE08F5B)

Select the projector and enter the pass phrase (bcsmeeting) if asked, then press "Connect"



Project from a Mobile Device

To project from an Android or iOS device, download and install the Epson iProjection app.

1. Press the **HOME** button on the projector or remote to bring up the home screen.
2. Select **Display the QR Code** and press enter or return
3. Tap **iProjection** on your device's Home Screen
4. Tap **Read QR Code**
5. Point your device's camera at the QR code your projector displays: the code is read automatically
6. If you are using an iOS device, follow the on-screen prompts to register your projector's WIFI profile.

Your device and Epson Projector are now connected!